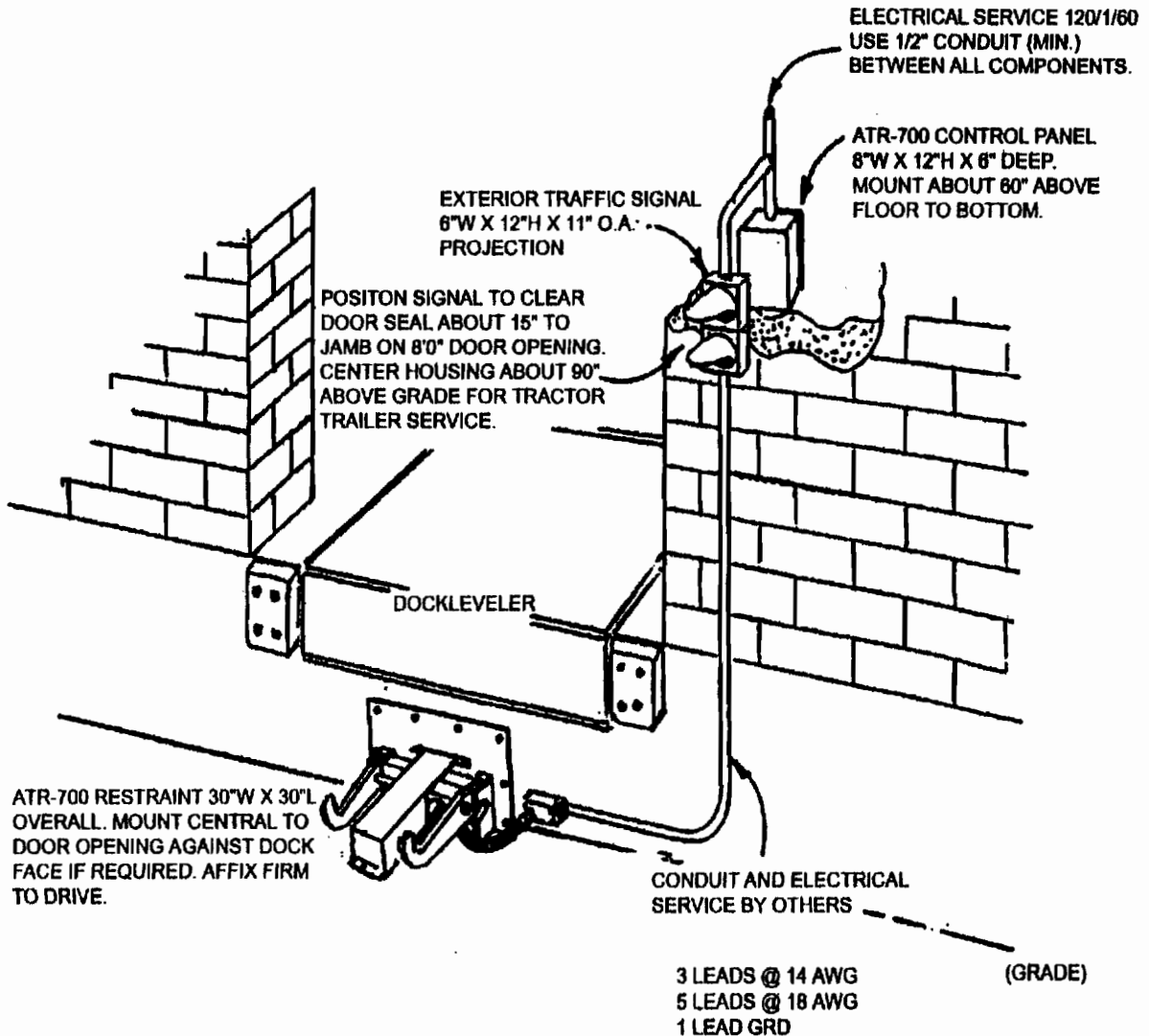


ARRANGEMENT OF DOCK AREA



This unit is designed for grade level location. If local conditions warrant, the Restraint frame may be located above grade. It is recommended that above grade mounting be limited to less than 2" to maintain clearance for projected new standards allowing lower ICC frame sections.

The success of and strength of any installed product relies heavily on the conditions of the material surrounding the installation site. This

will include the dock face and adjoining drive area for the ATR-700 Vehicle Restraint. Repair any structural defects to the dock face and/or drive prior to attempting equipment installation. If necessary, prepare alternate attachment methods to accommodate on-site conditions or contact your local representative to assist in preparation of accessories needed to adequately secure this product.