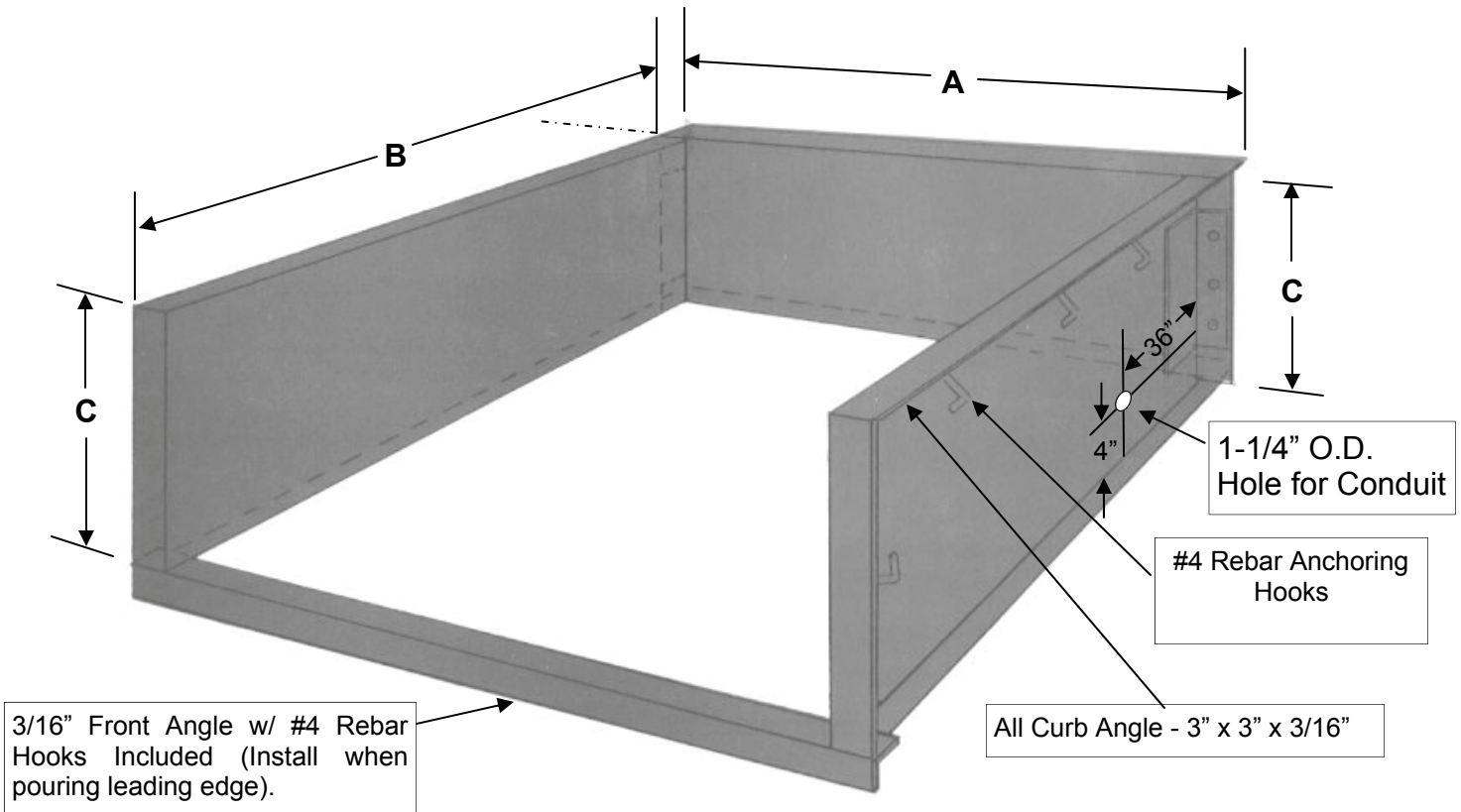




'EZ' Pan - Hydraulic Leveler Job Site Assembled

Panels Constructed of 12 Gauge Steel (1/8")



Pan Dimensions						
20" Pit Depth	6' W x 6' L	6' W x 8' L	7' W x 6' L	7' W x 8' L		
Dim 'A'	80" (I.D. 74")	80" (I.D. 74")	91" (I.D. 85")	91" (I.D. 85")		
Dim 'B'	63"	87"	63"	87"		
Dim 'C'	19-12" Rear / 20" Front					
24" Pit Depth	6' W x 6' L	6' W x 8' L	6' W x 10' L	7' W x 6' L	7' W x 8' L	7' W x 10' L
Dim 'A'	80" (I.D. 74")	80" (I.D. 74")	80" (I.D. 74")	91" (I.D. 85")	91" (I.D. 85")	91" (I.D. 85")
Dim 'B'	63"	87"	111"	63"	87"	111"
Dim 'C'	23-1/2" Rear / 24" Front					

Assembly Hardware Provided - 6 each 5/16" x 1" Bolts w/ Nuts & Washers